

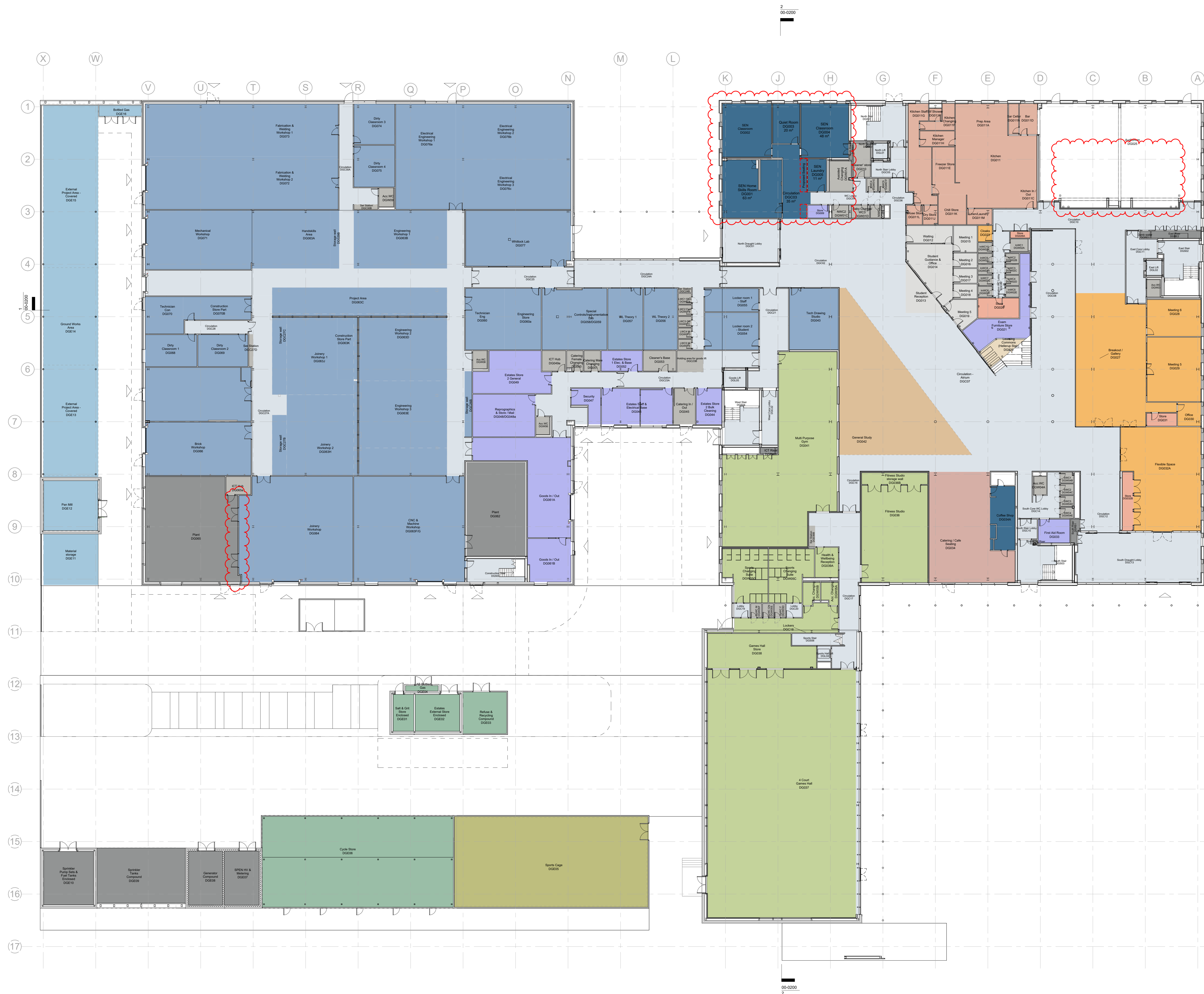
DRAWING INFORMATION

NOTE

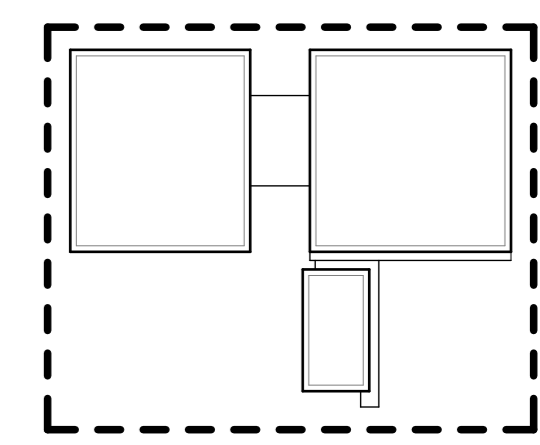
All dimensions should be checked on site.
Do not scale off this drawing.
Any drawing errors or divergences should be brought to the attention of the originator of this drawing.

Revision

C01	20.04.2022	Initial construction issue for CDP Design Development Drawing legend and notes
C02	21.12.2022	Departmental legend updated, Hellerup stair amended to reflect reduction in height of level 00 to 01 by 750mm as VE item 05. Innovation stair omitted, event's WC's and storage amended as VE item 85. Glazed partition indicated to D-G027 in lieu of curtain walling, alignment of partition amended; 2No. sliding screens to Circulation D-G012 omitted and glazed screen with double door added back into Flexible Space D-G032A as VE items 91 & 92. Scenic lift omitted as per VE item 156. Cross-conitor door added to D-G23A and to grilleline H11 as per Building Control Fire Engineering Note 01. External Wall return to GL G-R16-17 increased, Half height partitions to GL R16-8 and P-12 relocated to align with structural steel columns. Door added to ICT Hub as C02F 009. Roller shutter omitted to Painting & Decorating Workshop as VE item 54
C03	06.06.2023	DG 056 & DG059 merged into one room. DG05F & DG05G merged into one room. Revision clouds removed.
C04	15.09.2023	SEN Department moved to ground floor. DG009 Store increased in size to sit in line with DG005 new SEN laundry location. D-G033 circulation added to SEN department. Changes in line with EA1013. Auditorium Bleacher Seating omitted as EA1037. Partition line amended between DG064 and 065.



- Building support
- Building support (Ext)
- Business, Tourism & Enterprise
- Catering
- Circulation
- Commons
- Construction & Engineering
- Construction & Engineering (Ext)
- Creative Industries & Sports
- Creative Industries & Sports (Ext)
- Estates
- Innovation Hub - Events
- Innovation Hub - General Storage
- Innovation Hub - Multi-Function Events
- Learning & Resource
- Plant
- Student services



CONSTRUCTION

Reiach and Hall Architects

Dunfermline Learning Campus -
Fife College

General Arrangement Layout

Ground Floor Plan

DLC-RHA-ZZ-00-DR-A-00-0120

Rev: Scale: Date: Job No:
C04 1:200 A0 APR 2022 4617

8 Damaway Street Edinburgh EH3 6BG Tel: 0131 225 8444 www.riachandhall.co.uk