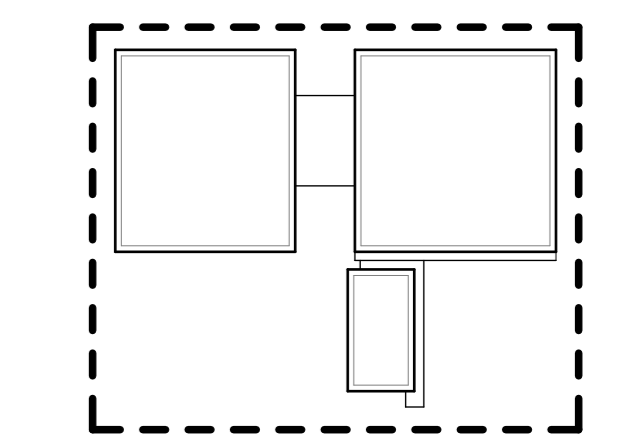


NOTE

All dimensions should be checked on site.
Do not scale off this drawing.
Any drawing errors or divergences should be brought to the attention of the originator of this drawing.

Revision

C01	20.04.2022	Initial construction issue for CDP Design Development Drawing legend and notes
C02	21.12.2022	Departmental legend updated, General Study DS017 layout amended, DS010B omitted and service riser increased, door amended to riser door Type R2, Scenic lift omitted as per VE item 158; Glazed screen omitted in DS020A; Sports block roof amended to show rooflights omitted as per VE item 55.
C03	06.06.2023	Revision clouds removed.
C04	15.09.2023	Movable Partition added between DS042/045 as EA019; Rooflights omitted to Workshop and Sports Block Roofs. Partition realigned between DS015 and 016. Door added to DS033 as EA1030.



CONSTRUCTION

Reiach and Hall Architects

Dunfermline Learning Campus -
Fife College

General Arrangement Layout

Second Floor Plan

DLC-RHA-ZZ-02-DR-A-00-0120

Rev: Scale: Date: Job No:
C04 1 : 200 A0 APR 2022 4617

8 Damaway Street Tel : 0131 225 8444
Edinburgh EH3 6BG www.reiachandhall.co.uk