

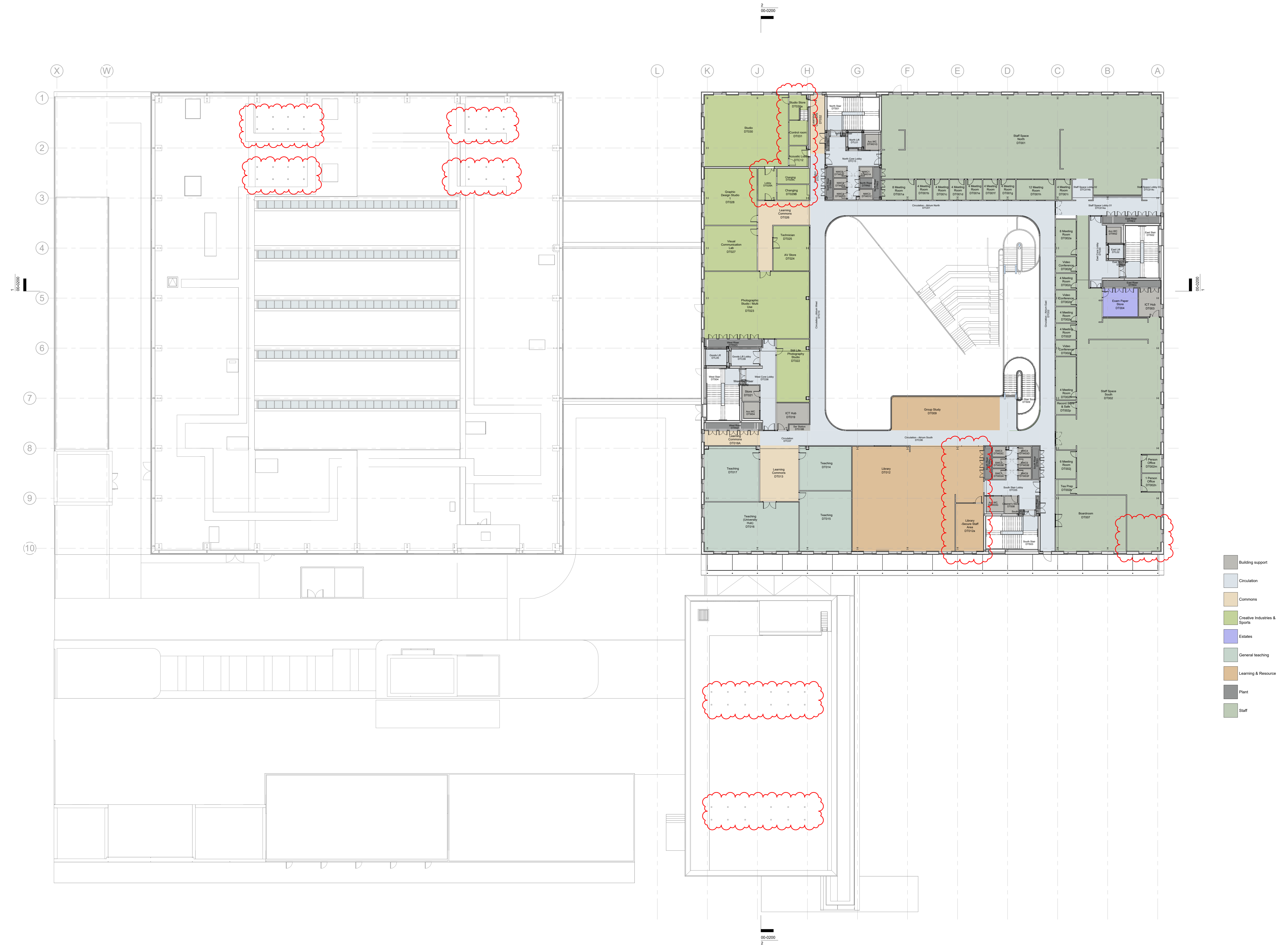
DRAWING INFORMATION

NOTE

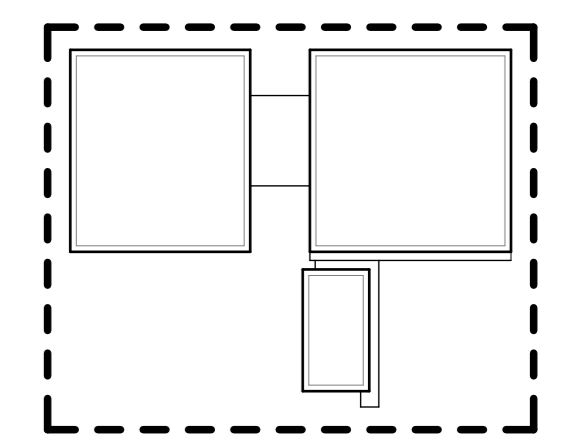
All dimensions should be checked on site.
Do not scale off this drawing.
Any drawing errors or divergences should be brought to the attention of the originator of this drawing.

Revision

C01	20.04.2022	Initial construction issue for CDP Design Development Drawing legend and notes
C02	21.12.2022	Departmental legend updated, General Study DT009 layout amended, DTW01B omitted and service riser increased, door amended to riser door Type R2, Scenic lift omitted as per VE item 158; Library DT012 layout amended.
C03	06.06.2023	Revision clouds removed.
C04	15.09.2023	Changes to Drama Studio and associated rooms as EA029; Principal's Office omitted as EA028; Introduction of Library Escape Door and layout change as EA052; Rooflights omitted to Workshop and Sports Block Roofs.



- Building support
- Circulation
- Commons
- Creative Industries & Sports
- Estates
- General teaching
- Learning & Resource
- Plant
- Staff



CONSTRUCTION

Reiach and Hall Architects

Dunfermline Learning Campus - Fife College

General Arrangement Layout
Third Floor Plan

DLC-RHA-ZZ-03-DR-A-00-0120

Rev: Scale: Date: Job No:
C04 1:200 A0 APR 2022 4617

8 Damaway Street Tel: 0131 225 8444
Edinburgh EH3 6BG www.riachandhall.co.uk